

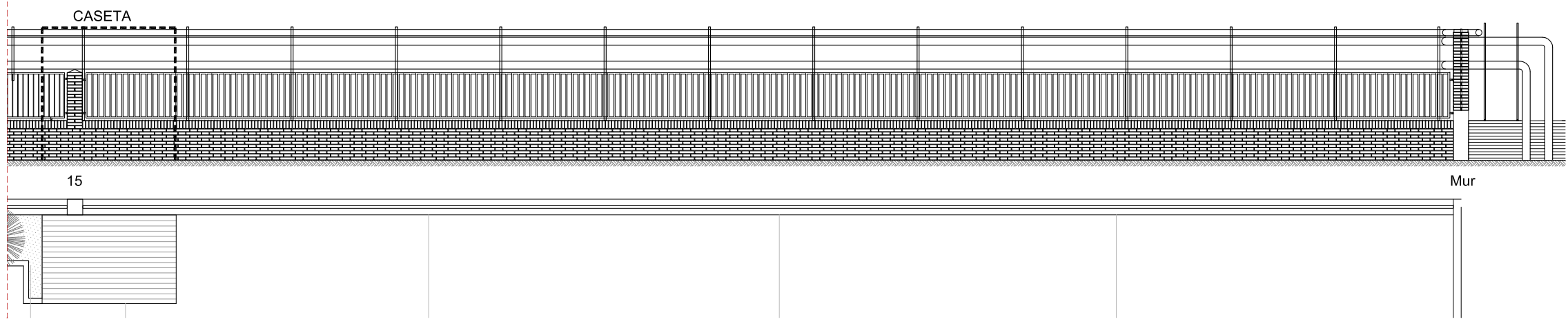
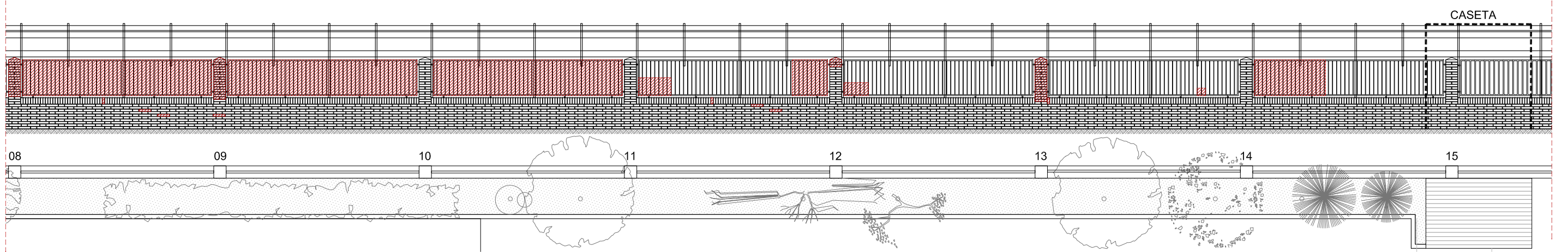
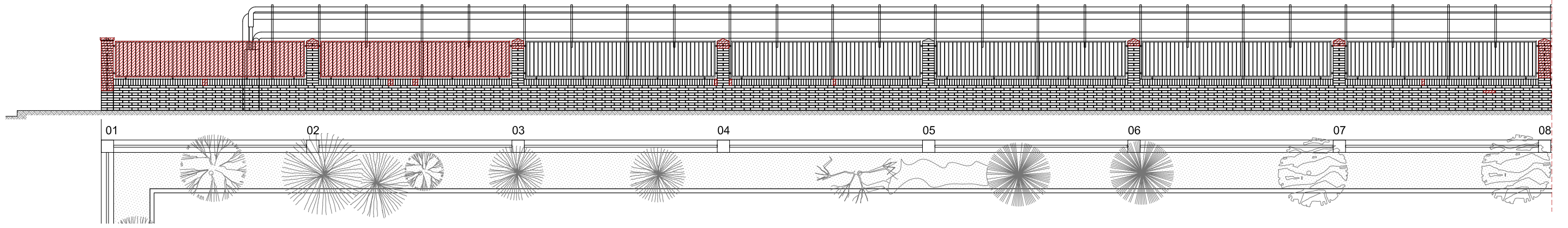


ANNEX GRÀFIC

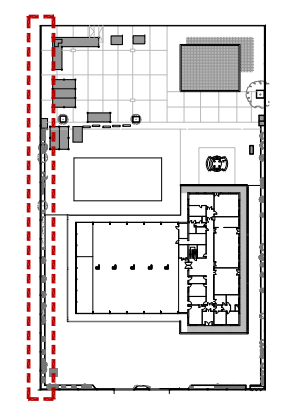
REPARACIÓ DE LA TANCA PERIMETRAL DEL PARC DE BOMBERS DE LA ZONA FRANCA

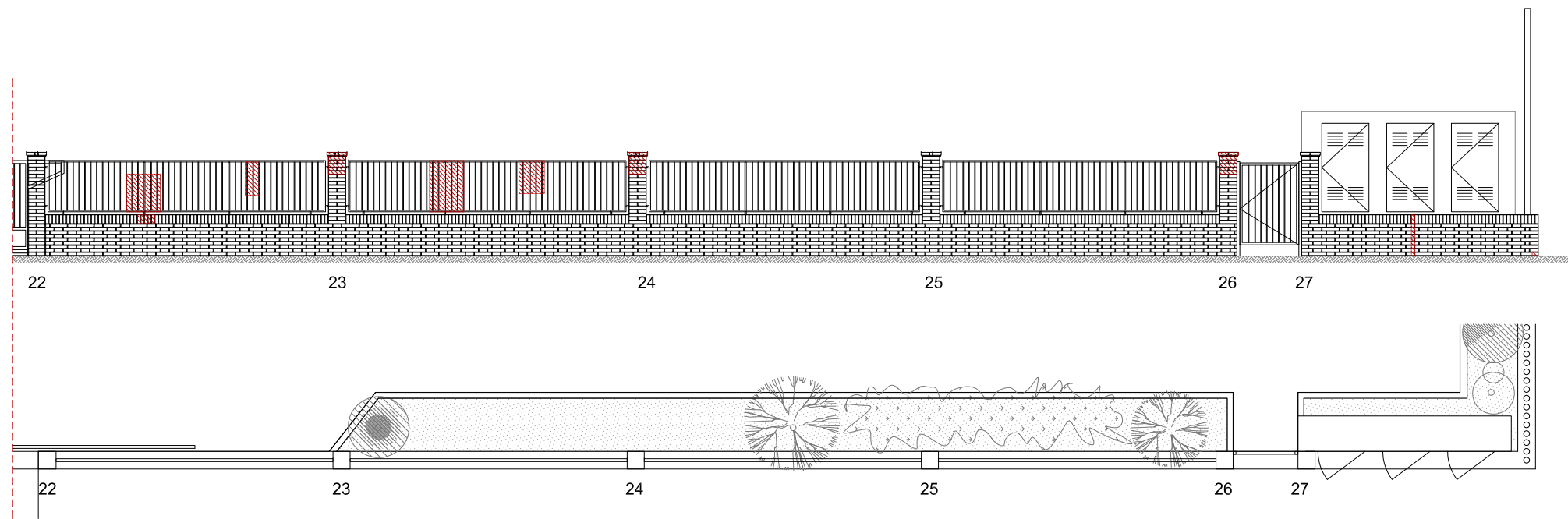
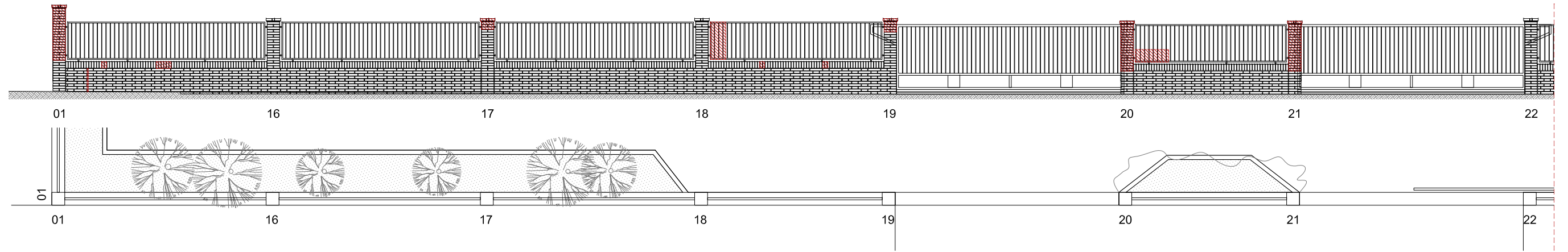
ÍNDIX DE PLÀNOLS


- 01 – Estat Actual i Defectes. Tanca costat magatzem.
- 02 – Estat Actual i Defectes. Tanca costat carrer.
- 03 – Estat Actual i Defectes. Tanca costat GUB.
- 04 – Detalls Nova Tanca.

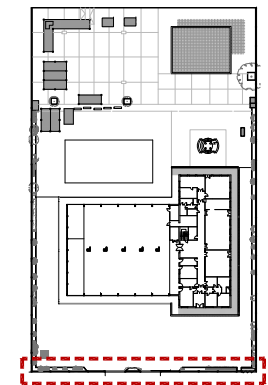


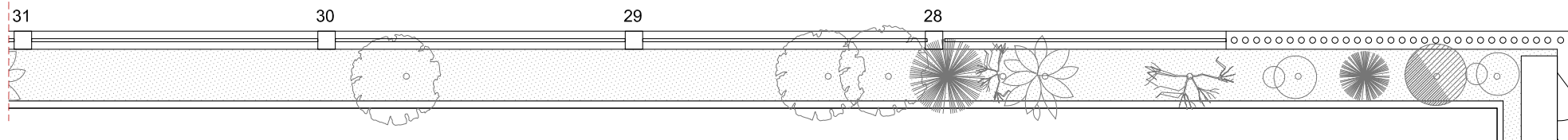
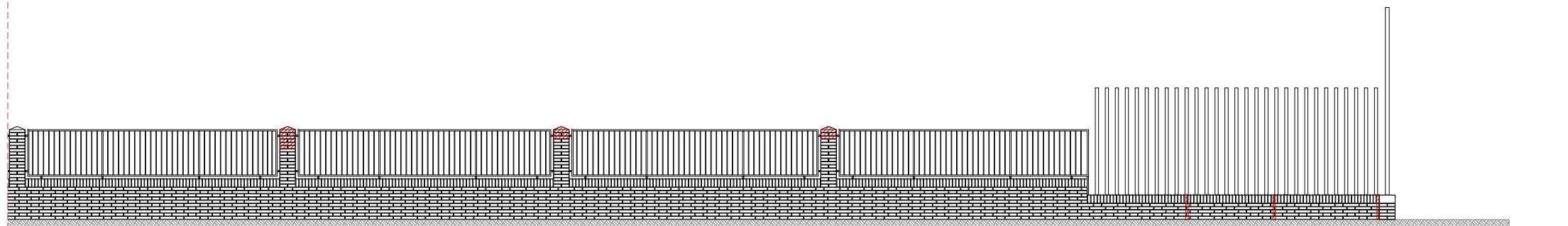
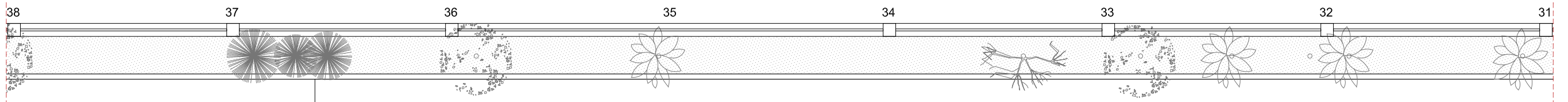
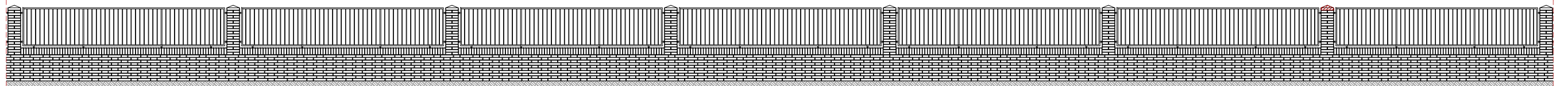
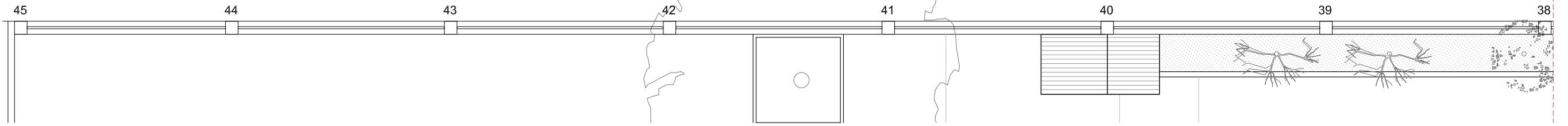
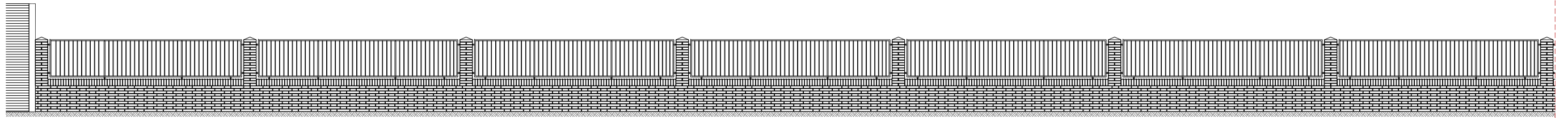
 PARTS MALMESES




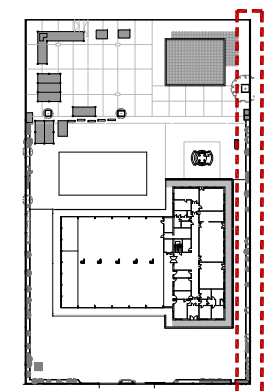


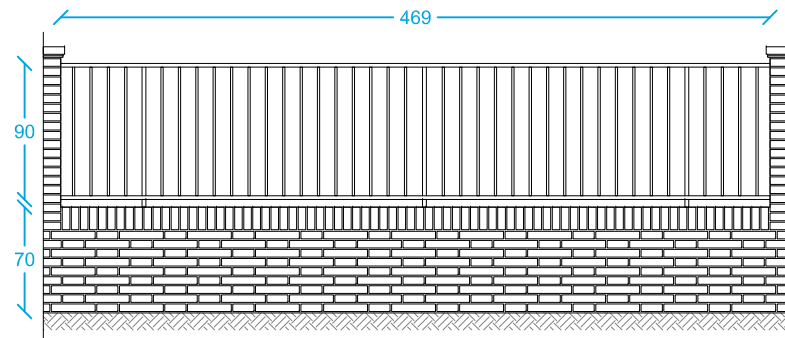
 PARTS MALMESES





 PARTS MALMESES



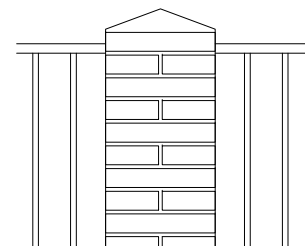


ESTAT ACTUAL TANCA TIPUS E 1:50

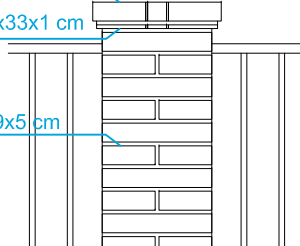
MAÓ MASSÍS - FILADA 35x35x5 cm

RAJOLA PLANA - FILADA 33x33x1 cm

MAÓ MASSÍS - FILADA 29x29x5 cm



ESTAT ACTUAL CAPITELL CIMENT E 1:20



ESTAT ACTUAL CAPITELL MAÓ E 1:20

PERFIL TUBULAR BUIT 40.20

10

PERFIL QUADRAT MASSÍS 20

FIXACIÓ AMB CARGOLAM DE SEURETAT

+

900

950

PLATINA 40.10

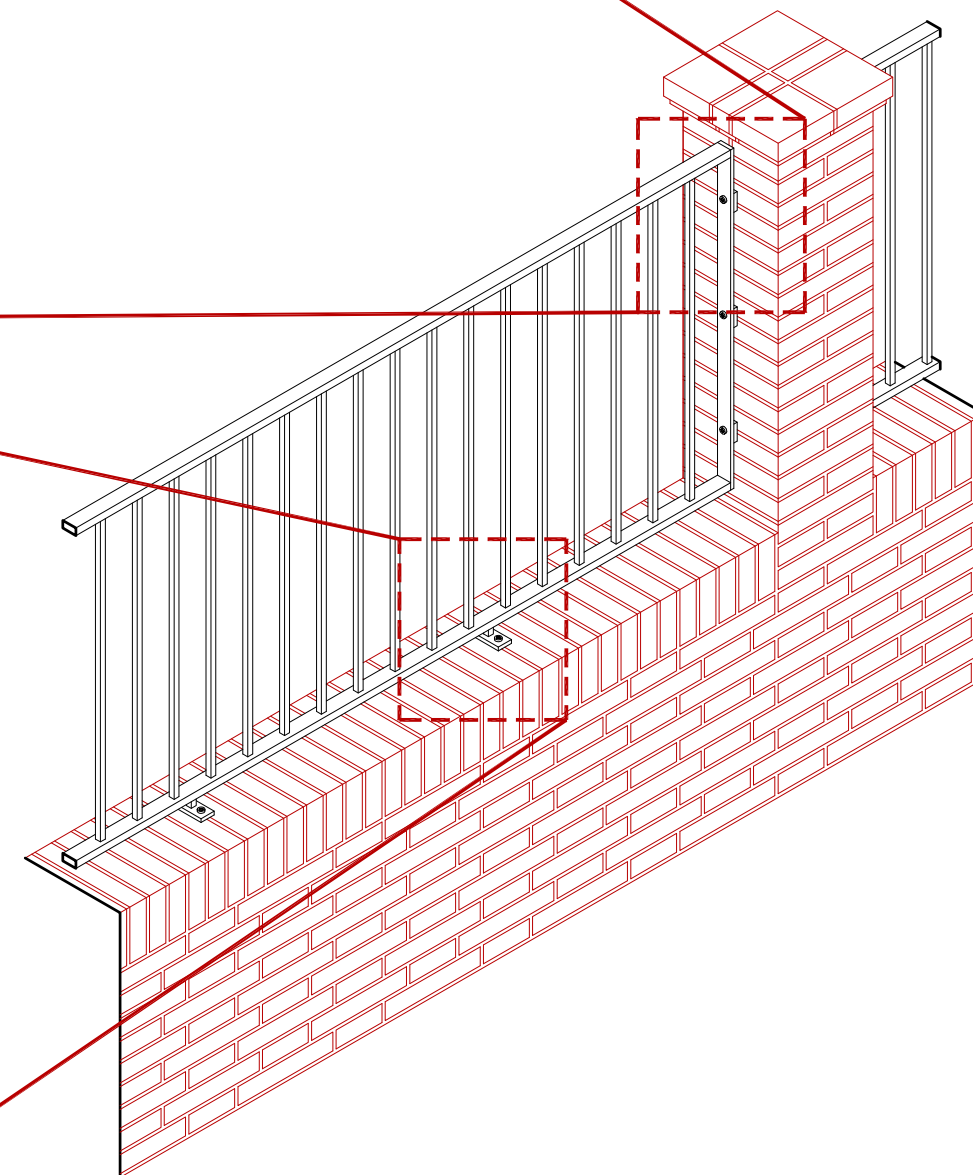
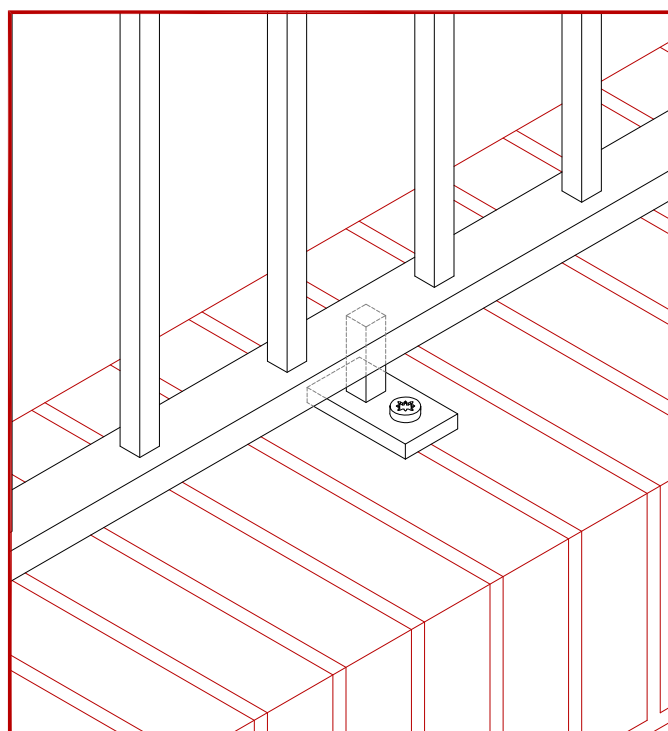
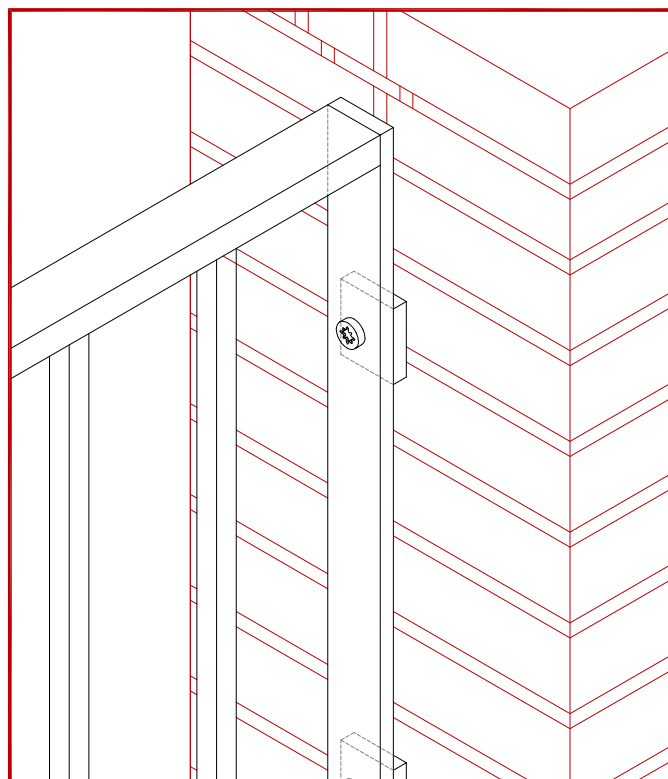
∅100

SUPLEMENT DE PLATINA 40.10

PERFIL TUBULAR BUIT 40.20

PLATINA 40.10

DETALL NOVA TANCA E 1:10



AXONOMETRIA INDICATIVA

